

Flute

# CANONS 4

1) Zum Gali Gali

Musical notation for 'Zum Gali Gali' in 4/4 time, featuring a melody with eighth and sixteenth notes.

2) Sumer Is A-Cumen In

Musical notation for 'Sumer Is A-Cumen In' in 6/8 time, featuring a melody with quarter and eighth notes.

3) White Coral Bells

Musical notation for 'White Coral Bells' in 4/4 time, featuring a melody with quarter and eighth notes.

4) Christmas Is Coming

Musical notation for 'Christmas Is Coming' in 4/4 time, featuring a melody with eighth and sixteenth notes.

5) Three Blind Mice

Musical notation for 'Three Blind Mice' in 3/4 time, featuring a melody with quarter and eighth notes.



# CANONS 4

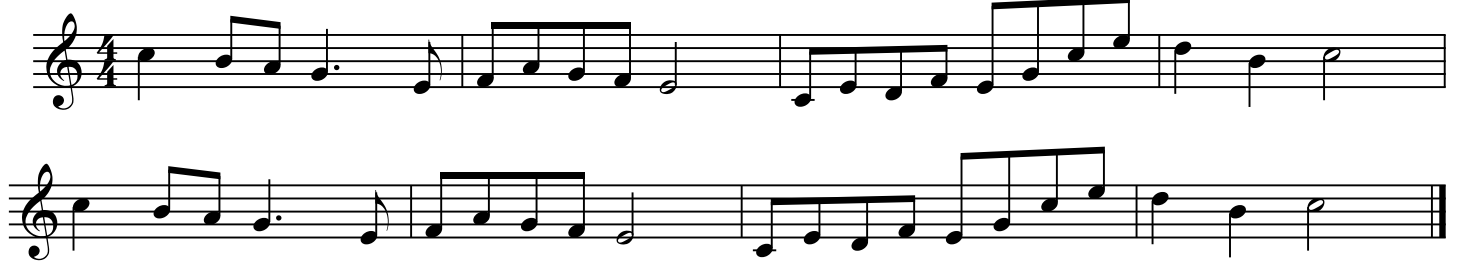
## 1) Zum Gali Gali



## 2) Sumer Is A-Cumen In



## 3) White Coral Bells



## 4) Christmas Is Coming



## 5) Three Blind Mice



# CANONS 4

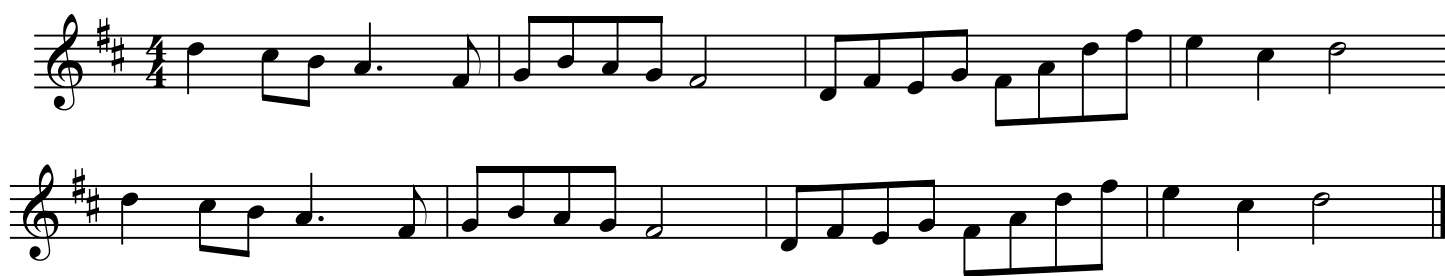
## 1) Zum Gali Gali



## 2) Sumer Is A-Cumen In



## 3) White Coral Bells



## 4) Christmas Is Coming



## 5) Three Blind Mice



# CANONS 4

## 1) Zum Gali Gali

Two staves of musical notation for the canon 'Zum Gali Gali'. The music is in the key of B-flat major (one flat) and 4/4 time. It features a rhythmic melody of eighth and sixteenth notes.

## 2) Sumer Is A-Cumen In

Four staves of musical notation for the canon 'Sumer Is A-Cumen In'. The music is in the key of D major (two sharps) and 6/8 time. It features a melody with dotted rhythms and eighth notes.

## 3) White Coral Bells (opt. 8vb)

Two staves of musical notation for the canon 'White Coral Bells'. The music is in the key of D major (two sharps) and 4/4 time. It features a melody with eighth and sixteenth notes.

## 4) Christmas Is Coming (opt. 8vb)

Two staves of musical notation for the canon 'Christmas Is Coming'. The music is in the key of D major (two sharps) and 4/4 time. It features a melody with eighth and sixteenth notes.

## 5) Three Blind Mice



One staff of musical notation for the canon 'Three Blind Mice'. The music is in the key of D major (two sharps) and 4/4 time. It features a melody with eighth and sixteenth notes.

French Horn

# CANONS 4

1) Zum Gali Gali

Musical notation for 'Zum Gali Gali' in 4/4 time, featuring a melodic line with eighth and sixteenth notes.

2) Sumer Is A-Cumen In

Musical notation for 'Sumer Is A-Cumen In' in 6/8 time, featuring a melodic line with eighth and sixteenth notes.

3) White Coral Bells (opt. 8vb)

Musical notation for 'White Coral Bells' in 4/4 time, featuring a melodic line with eighth and sixteenth notes.

4) Christmas Is Coming (opt. 8vb)

Musical notation for 'Christmas Is Coming' in 4/4 time, featuring a melodic line with eighth and sixteenth notes.

5) Three Blind Mice



Musical notation for 'Three Blind Mice' in 3/4 time, featuring a melodic line with eighth and sixteenth notes.

Trombone / Baritone

# CANONS 4

## 1) Zum Gali Gali

Two staves of musical notation for the piece 'Zum Gali Gali'. The first staff begins with a bass clef, a key signature of two flats (B-flat and E-flat), and a 4/4 time signature. The melody consists of eighth and quarter notes, ending with a double bar line.

## 2) Sumer Is A-Cumen In

Four staves of musical notation for the piece 'Sumer Is A-Cumen In'. The first staff begins with a bass clef, a key signature of two flats, and a 6/8 time signature. The melody features a mix of eighth, quarter, and half notes, concluding with a double bar line.

## 3) White Coral Bells

Two staves of musical notation for the piece 'White Coral Bells'. The first staff begins with a bass clef, a key signature of two flats, and a 4/4 time signature. The melody is composed of quarter and eighth notes, ending with a double bar line.

## 4) Christmas Is Coming

Two staves of musical notation for the piece 'Christmas Is Coming'. The first staff begins with a bass clef, a key signature of two flats, and a 4/4 time signature. The melody is primarily composed of eighth notes, ending with a double bar line.

## 5) Three Blind Mice

One staff of musical notation for the piece 'Three Blind Mice'. It begins with a bass clef, a key signature of two flats, and a 4/4 time signature. The melody includes eighth notes and a final section with a key signature change to one flat, ending with a double bar line.



Tuba

# CANONS 4

## 1) Zum Gali Gali

Two staves of musical notation for the piece 'Zum Gali Gali'. The first staff begins with a bass clef, a key signature of three flats (B-flat, E-flat, A-flat), and a 4/4 time signature. The melody consists of eighth and quarter notes, ending with a double bar line.

## 2) Sumer Is A-Cumen In

Four staves of musical notation for the piece 'Sumer Is A-Cumen In'. The first staff begins with a bass clef, a key signature of three flats, and a 6/8 time signature. The melody is written in a single line across four staves, featuring a mix of eighth and quarter notes.

## 3) White Coral Bells

Two staves of musical notation for the piece 'White Coral Bells'. The first staff begins with a bass clef, a key signature of one flat (B-flat), and a 4/4 time signature. The melody is written in a single line across two staves, featuring eighth and quarter notes.

## 4) Christmas Is Coming

Two staves of musical notation for the piece 'Christmas Is Coming'. The first staff begins with a bass clef, a key signature of three flats, and a 4/4 time signature. The melody is written in a single line across two staves, featuring eighth and quarter notes.

## 5) Three Blind Mice

One staff of musical notation for the piece 'Three Blind Mice'. The staff begins with a bass clef, a key signature of one flat, and a 4/4 time signature. The melody is written in a single line, featuring eighth and quarter notes.

