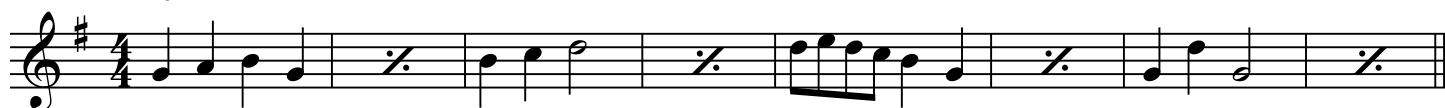


# Guitar

# CANONS 1

## 1) Frere Jacques (G)



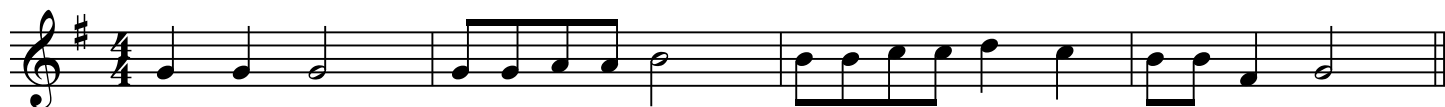
## 2) Frere Jacques (D)



## 3) Frere Jacques (C)



## 4) Laughing Song (G)



## 5) Laughing Song (C)



## 6) London's Burning



## 7) Kookaburra



## 8) Tallis' Canon



## 9) Sweetly Sings The Donkey



# Guitar

# CANONS 2

## 1) Go Now In Peace



## 2) Wayfaring Stranger



## 3) Canoe Song



## 4) Grant Us Peace



## 5) Bell Canon



## 6) Row Row Row



## 7) Little Tom Tinker



Guitar

# CANONS 3

1) Oh How Lovely

Musical notation for 'Oh How Lovely' in G major, 3/4 time. The piece consists of two staves. The first staff contains the main melody, and the second staff contains a bass line. A box with the number '2' is placed above the first staff, indicating a second ending or a specific measure.

2) Hey, Ho, Nobody Home

Musical notation for 'Hey, Ho, Nobody Home' in G major, 4/4 time. The piece consists of two staves. The first staff contains the main melody, and the second staff contains a bass line. A box with the number '2' is placed above the first staff, indicating a second ending or a specific measure.

3) Music Alone Shall Live

Musical notation for 'Music Alone Shall Live' in G major, 3/4 time. The piece consists of two staves. The first staff contains the main melody, and the second staff contains a bass line. A box with the number '2' is placed above the first staff, indicating a second ending or a specific measure.

4) Now We Are Met

Musical notation for 'Now We Are Met' in G major, 4/4 time. The piece consists of two staves. The first staff contains the main melody, and the second staff contains a bass line. A box with the number '2' is placed above the first staff, indicating a second ending or a specific measure.

5) Shalom Chaverim

Musical notation for 'Shalom Chaverim' in G major, 4/4 time. The piece consists of two staves. The first staff contains the main melody, and the second staff contains a bass line. A box with the number '2' is placed above the first staff, indicating a second ending or a specific measure.

6) To The Greenwood

Musical notation for 'To The Greenwood' in G major, 4/4 time. The piece consists of two staves. The first staff contains the main melody, and the second staff contains a bass line. A box with the number '2' is placed above the first staff, indicating a second ending or a specific measure.

# CANONS 4

## 1) Zum Gali Gali

Two staves of musical notation for the piece 'Zum Gali Gali'. The first staff begins with a treble clef, a 4/4 time signature, and a key signature of one sharp (F#). The melody consists of eighth and quarter notes, ending with a double bar line.

## 2) Sumer Is A-Cumen In

Four staves of musical notation for the piece 'Sumer Is A-Cumen In'. The first staff begins with a treble clef, a 6/8 time signature, and a key signature of one sharp (F#). The melody is written in a single line across four staves, ending with a double bar line.

## 3) White Coral Bells

Two staves of musical notation for the piece 'White Coral Bells'. The first staff begins with a treble clef, a 4/4 time signature, and a key signature of one sharp (F#). The melody features eighth and quarter notes, ending with a double bar line.

## 4) Christmas Is Coming

Two staves of musical notation for the piece 'Christmas Is Coming'. The first staff begins with a treble clef, a 4/4 time signature, and a key signature of one sharp (F#). The melody is written in a single line across two staves, ending with a double bar line.

## 5) Three Blind Mice



A single staff of musical notation for the piece 'Three Blind Mice'. It begins with a treble clef, a 3/4 time signature, and a key signature of one flat (Bb). The melody consists of quarter and eighth notes, ending with a double bar line.